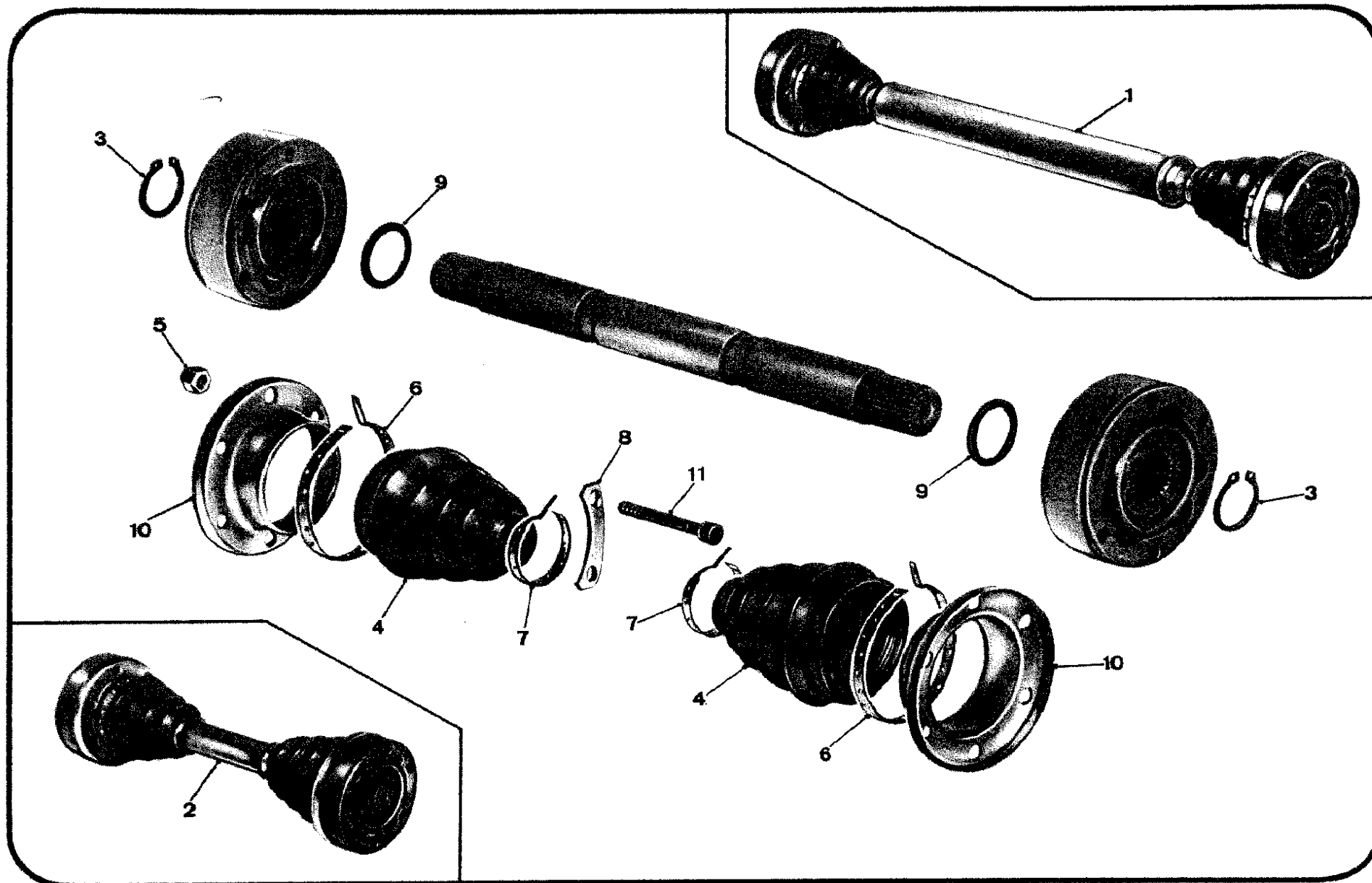


STERZO-SOSPENSIONI-RUOTE - DIRECTION-SUSPENSIONS-ROUES - STEERING-SUSPENSIONS-WHEELS - LENKUNG UND FAHRWERK
TRASMISSIONE COMANDO RUOTE POSTERIORI - ARBRES DE ROUES AR - REAR WHEEL DRIVING SHAFTS - HINTERRADANTRIEB

Tav. 39

Tav. 39



MONTECARLO

BETA

BETA

MONTECARLO

STERZO-SOSPENSIONI-RUOTE - DIRECTION-SUSPENSIONS-ROUES - STEERING-SUSPENSIONS-WHEELS - LENKUNG UND FAHRWERK
 TRASMISSIONE COMANDO RUOTE POSTERIORI - ARBRES DE ROUES AR - REAR WHEEL DRIVING SHAFTS - HINTERRADANTRIEB

Tav. 39

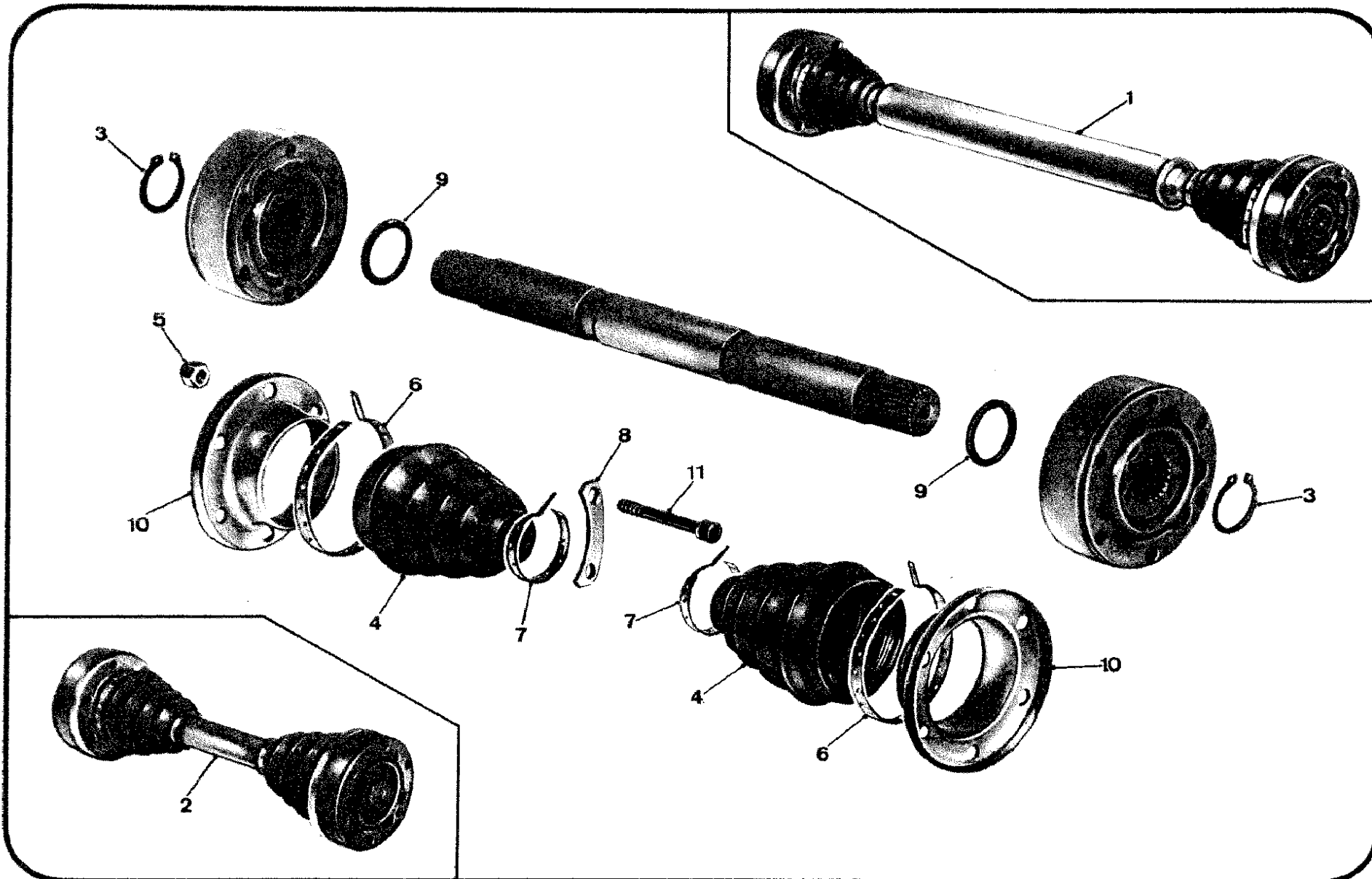
Tav. 39

N.	N. Ord.	Origine od ubic.	Q.	C.S.	Appl.	DENOMINAZIONE	DESIGNATION	DESCRIPTION	BENENNUNG	per tipi - p. types for types - für Bm.
1	4347607		2			Semi-albero D.	Arbre D	Shaft, right	Welle	
2	4347608		2			Semi-albero S.	Arbre G	Shaft, left	Welle	
3	4315450		4			Anello elastico per giunto	Circlips	Circlip	Federring	
4	4315444		4			Cuffia per giunto	Soufflet	Dust guard	Schutzbalg	
5	16104121		24			Dado p.vite fiss.giunto	Ecrou	Nut	Mutter	
6	4315447		4			Fascetta fiss.cuffia sul sopporto	Collier	Clip	Spannband	
7	4315448		4			Fascetta fiss.cuffia sul semi-albero	Collier	Clip	Spannband	
8	4315446		12			Piastrina vite fiss.giunto	Plaquette	Lockplate	Sicherungsplatte	
9	4315449		4			Rosetta elastica per giunto	Rondelle élastique	Washer	Federscheibe	
10	4315445		4			Sopporto per cuffia	Support	Sleeve, mounting	Schutzbalgträger	
11	4342726		24			Vite fiss.giunto alla flangia	Vis	Bolt	Schraube	

STERZO-SOSPENSIONI-RUOTE - DIRECTION-SUSPENSIONS-ROUES - STEERING-SUSPENSIONS-WHEELS - LENKUNG UND FAHRWERK
TRASMISSIONE COMANDO RUOTE POSTERIORI - ARBRES DE ROUES AR - REAR WHEEL DRIVING SHAFTS - HINTERRADANTRIEB

Tav. 39

Tav. 39



0
4 02:7:06AM:
03/ 50